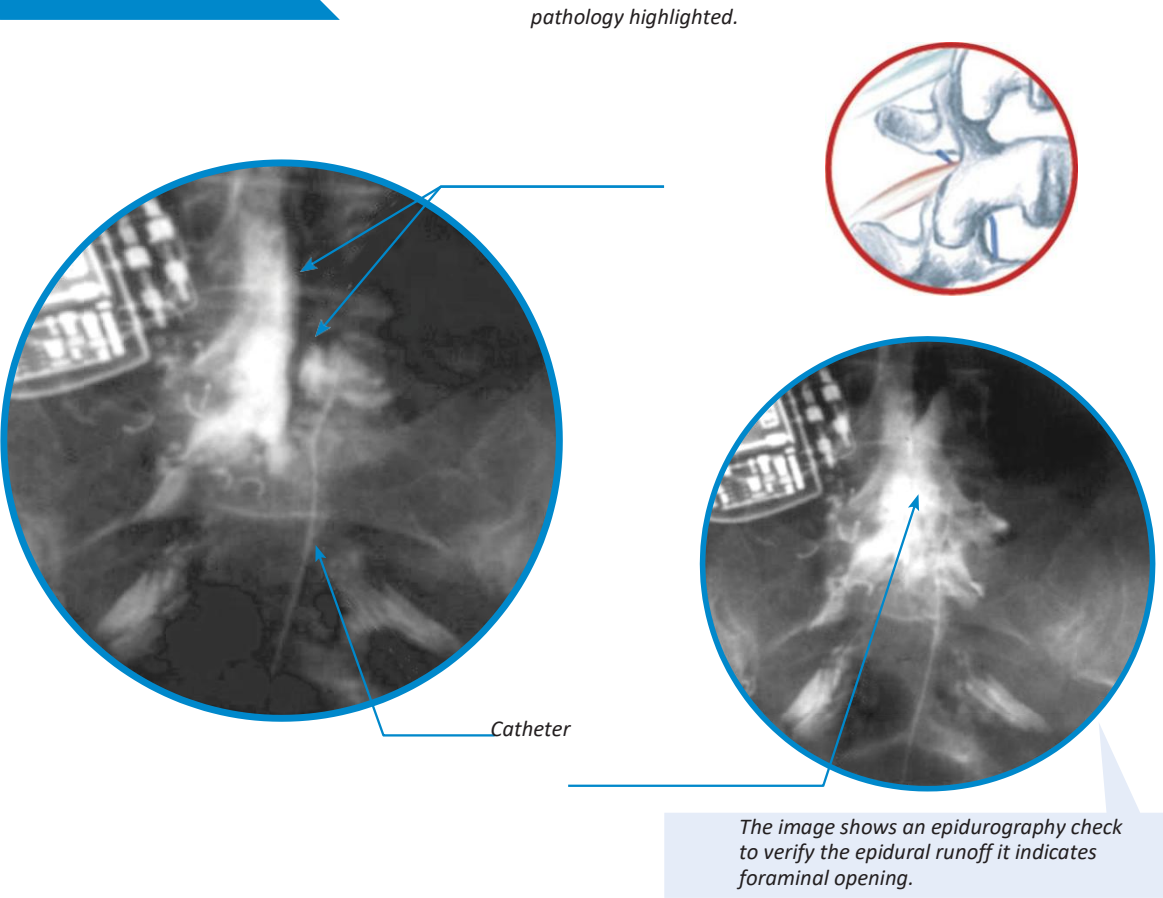


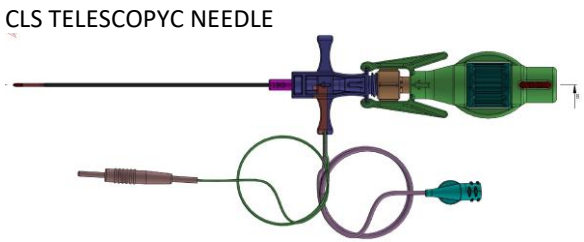
WAY-CATH - The new generation of specialized catheters for transsacral or intraforaminal adhesiolysis with the aid of PRF

EPI SENSE



Epi-Sense: identical technical-functional characteristics of the Epi-Stim version, but with the possibility of performing a pulsed radiofrequency with the help of temperature control thanks to a disposable polyvalent probe present in the kit and dedicated to the catheter.

The particular needle curved introduction offers the user the possibility to perform an approach to the epidural space both through the sacral and intra-foraminal access as the needle itself is equipped with a double non-cutting stylet in order to avoid all risks of injury and / or accidental neural injections to the ganglion or nerve root.



Code	Description	Packaging
6000001	WAY-CATH MOD. Epi-sense "V" - G.21 cm 40 catheter for adhesiolysis with PRF	Single
6000004	WAY-CATH MOD. EPI-SENSE - G.19 catheter for adhesiolysis with PRF	Single
6000035	WAY-CATH MOD. "V" - G.21 cm 40 - CURVED CLS NEEDLE	Pcs. 5
6000045	WAY-CATH MOD. "T" - G.19 cm 40 - CURVED CLS NEEDLE	Pcs. 5
6000005	EPI-STIM - G. 19 catheter for stimuable adhesiolysis	Single
60000 xx	CURVED NEEDLE CLSG 18 mm. 120	Pcs. 10
6000034	CURVED NEEDLE CLSG 16 mm . 120	Pcs. 10

REFERENCES

- 1) Manchikanti L, Pakanati RR, Bakhit CE, et al. Evolution of Epidural Lysis of Adhesions Pain Physician 2000; Volume 3, Number 3, pp 262-272
- 2) Barsa JE, Charlton, JF (1984) Diagnosis of epidural scarring and its possible contributions to chronic low back pain syndrome. Pain, Vol. 4 (s4), pp. S376-S385
- 3) Nardi LF Percutaneous Lysis of Peridural Adhesions. Proceedings 25th AISD National Congress, Venice May 8-9-10, 2003, 47-50
- 4) Jankovic D., Wells C. Caudal Epidural Anesthesia. In: Regional Anesthesia, Masson 2002: 287-298.
- 5) Hopwood MB, Abram SE. Factors associated with failure of lumbar epidural steroids Reg Anesth 1993 Jul-Aug; 18 (4): 238-43
- 6) Kuslich SD; Ulstrom CL; Michael CJ. The Tissue Origin of Low back Pain and Sciatica: a report of pain response to tissue stimulation during operations on the lumbar spine using local anesthesia Orthop Clin N Am 1991; 22: 181-7
- 7) Manchikanti L, Vidyasagar Pampati, M Sc, Bert Fellows Et al. Role of One Day Epidural Adhesiolysis in Management of Chronic Low Back Pain: A Randomized Clinical Trial Pain Physician; Vol. 4, No. 2, 2001
- 8) Manchikanti L, Vijay Singh, David Kloth et al. ASIPP Practice Guidelines. Pain Physician Vol. 4, No. 1, 2001
- 9) Manchikanti L, Peter S. Staats, Vijay Singh et al. Evidence-Based Practice Guidelines for Interventional Techniques in the Management of Chronic Spinal Pain. Pain Physician Vol. 6, No. 1, 2003
- 10) Racz GB., Holubec JT. Lysis of adhesions in the epidural space. In: Racz GB. Ed. Techniques of Neurolysis, Boston: Kluwer Academic Publishers 1989: 73-86
- 11) Talu GK Erdine S. Complications of Epidural Neuroplasty: A retrospective Evaluation Neuromodulation Vol 6, No. 4, 2003
- 12) Nardi LF, Beltrutti D. One Day Neuroplasty: Evaluation of Efficacy and Complications Poster in 3rd World Congress World Institute of Pain, Barcelona, 2004
- 13) Manchikanti L, Rivera JJ, Pampati V One day Lumbar epidural Adhesiolysis and Hypertonic Saline Neurolysis in Treatment of Cronic Low Back Pain: A Randomized, Double-Blind Trial Pain Physician Vol. 7, No. 2, 2004
- 14) Racz GB, Heavner JE, Trescot A Percutaneous lysis of epidural adhesions - evidence for safety and efficacy Pain Pract. 2008 Jul-Aug; 8 (4): 277-86

WAY-CATH



WE LIKE TO STAY AROUND YOU

EPIDUROGRAPHY

During the adhesiolysis procedure, an epidurography is performed at the desired level to underline the epidural defect. This demonstrates fluid dissection in scar formation and emphasizes decompression of the affected nerve roots. Epidurography will also be used for the correct placement of insertion of the catheter tip, well identifying the area of Minus or the filling defect.

EPIDURAL CATHETERS FOR ADHESIOLYSIS

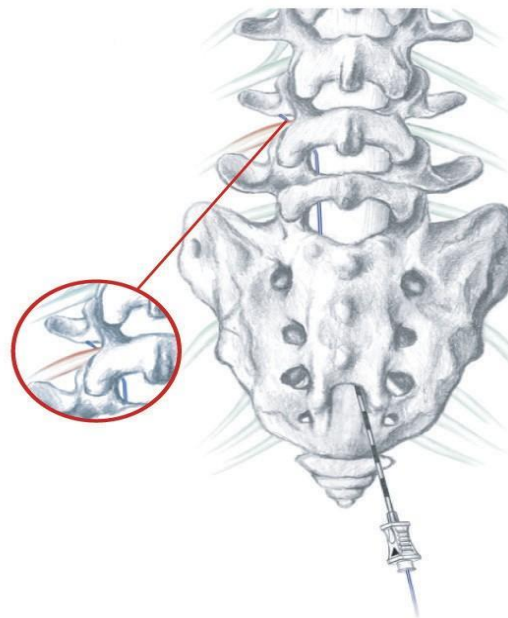
The spiral-guided epidural catheters produced are made of surgical-grade stainless steel monofilament. The free distal tip is soft, smooth and rounded with the coils slightly dilated to allow maximum flexibility, optimal distribution and diffusion of the solution injected at 360 °. All the catheters produced have the characteristic of having a safety thread inside the lumen fixed to both ends of the catheter to increase its tension force and limit its longitudinal stretching or breakage. The helical metal spiral makes the catheter particularly resistant to kinking and collapse, guaranteeing the patency of the lumen in any circumstance, furthermore the material based on stainless steel and titanium makes the catheter radiopaque without the aid of any contrast medium.

General characteristics

- Stainless steel surgical type
- Monofilament Distal tip rounded and atraumatic with high defective capacity
- Resistance to kinking and collapse
- Equipped with full-length
- mandrel Radiopaque, allows to have clear images in fluoroscopy and allow perfect positioning accuracy
- Absence of reactivity to neurolytics: phenol, alcohol, glycerol, etc.
- Endoluminal surgical stainless steel safety wire to increase the resistance of the catheter to longitudinal traction and limit the risk of breakage

injected, allows to perform an epidurogram in a simple way regardless of the position of the catheter tip.

In the internal lumen there is a titanium safety wire fixed to both ends of the catheter to increase its tension force and limit its longitudinal stretching. The presence of an elastic memory in the metal spiral makes the catheter resistant to kinking and collapse, while



EPI-SENSE "V"

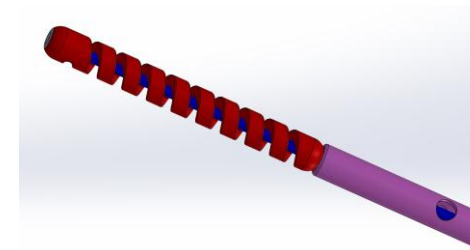
coated spiral catheter that can be introduced through and curved and blunt CLS-type needle 18G. Equipped with spindle. Recommended for epidural and cervical applications, for transforaminal infusions WITH PRF PROCEDURE and for placement of an optically guided spinal endoscopy catheter.

possibility of length cm 40 - 21G. Small size but same 1: 1 torsion ratio and precise directional control. Due to its particularly slim design, the EPI-SENSE "V"-guided adhesiolysis is the only fully

EPI-SENSE

WAY-CATH EPI-SENSE - polyvalent catheter for the treatment of adhesiolysis WITH PRF, *peridurography*, drug test and root stimulation trial belongs to the line of spiral guided epidural catheters that are considered by the leading experts in interventional analgesic techniques the only catheters dedicated for a correct lumbosacral approach, thanks to their construction characteristics.

EPI-STIM was also made of surgical grade stainless steel monofilament, using an elastic memory material, with double photopolymer coverage. The distal tip is closed, free and soft, smooth and rounded with the coils slightly dilated to allow the optimal diffusion of the injected liquids into the epidural space. The same uncoated tip allows the transmission of impulses at the root level, thanks to the simple connection of the catheter to an external stimulator. This type of stimulation allows us to verify the catheter tip positioning metamer and perform a real first trial of “SCS” stimulation to verify the exact positioning of the catheter in the area of Minus. The maximum flexibility and 360 ° distribution of the solution



EPI-SENSE CATHETER STRUCTURE

Adhesiolysis catheter CONSISTS OF:

- Epidural catheter with medical stainless steel body, Pebax Nylon coating, with medical stainless steel safety wire, diameter 19G.
- Electrified connection (PC Makrolon 1805) makes easier both the connection between the cone and the catheter and the positioning of the dressing.
- Syringe LOR 10ml. With polypropylene rod and cylinder, natural rubber piston, compression seal and dead space: max. 0.07 ml.
- Flexible introducer needle with Teflon cannula.
- 16G CLS curved needle with open bevel to reduce the chance of damaging the catheter during placement.
- 0.22 µ flat filter (PC Makrolon 1805), Eraclene ML 70 connections, polyester membrane, filter surface 4 cm2.
- Electrical connection - 2mm. Banana plug TBA.
- Scalpel in medical steel.
- Patient sheet in non-woven fabric - 50x50 cm. - with adhesive hole 10x18 cm.
- Core made from a spring with coils in hardened stainless steel and equipped with elastic memory.
- Torsion ratio 1: 1. Radiopaque, to have clear fluoroscopic images and allow for positioning accuracy.
- Electrical conductivity for tip stimulation.

INDICATIONS

- For epidural infusion of drugs and / or anesthetics.
- For peridurography.
- For the chemical and mechanical breakdown of adhesion lyses.
- For any type of drug test.
- For root stimulation trials.
- For pulsed radiofrequency with any type of lesion generator, without "T" control.
- For continuous central or extra foraminal block.
- Ideal in narrow channel syndromes.

WAY-CATH EPI-STIM

EPI-STIM.

Spiral Guided Epidural Adhesiolysis Catheters are made of stainless steel monofilament. The simplified version of the EPI-STIM polyvalent catheter for the treatment of lysis of adhesions, peridurography, drug test and root stimulation trial, belongs to the line of spiral guided epidural catheters are considered by the leading experts in interventional analgesic techniques the only catheters dedicated for a correct lumbosacral approach, thanks to their construction characteristics; equipped with a curved 16G introduction needle with blunt tip and removable electrified connector.